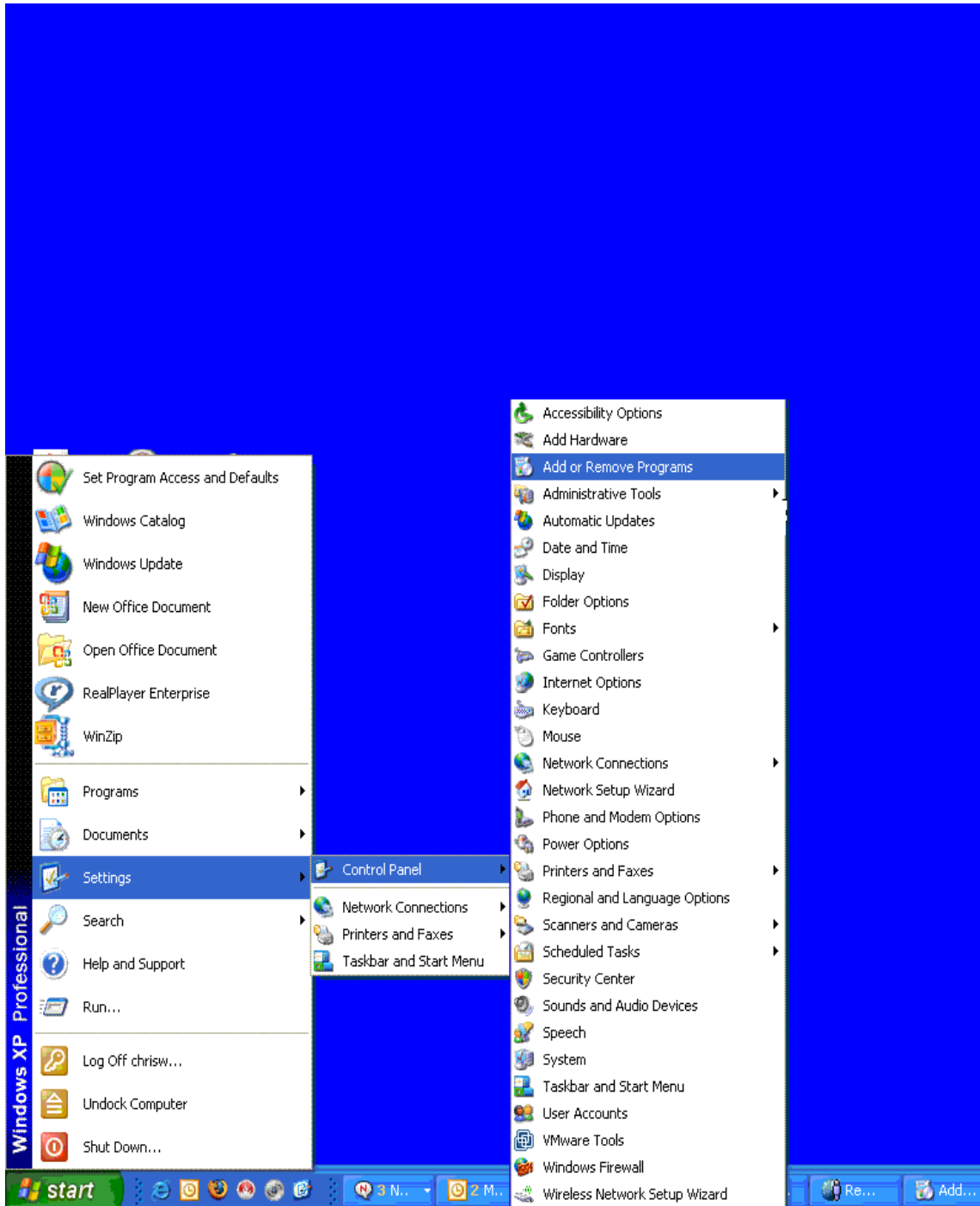


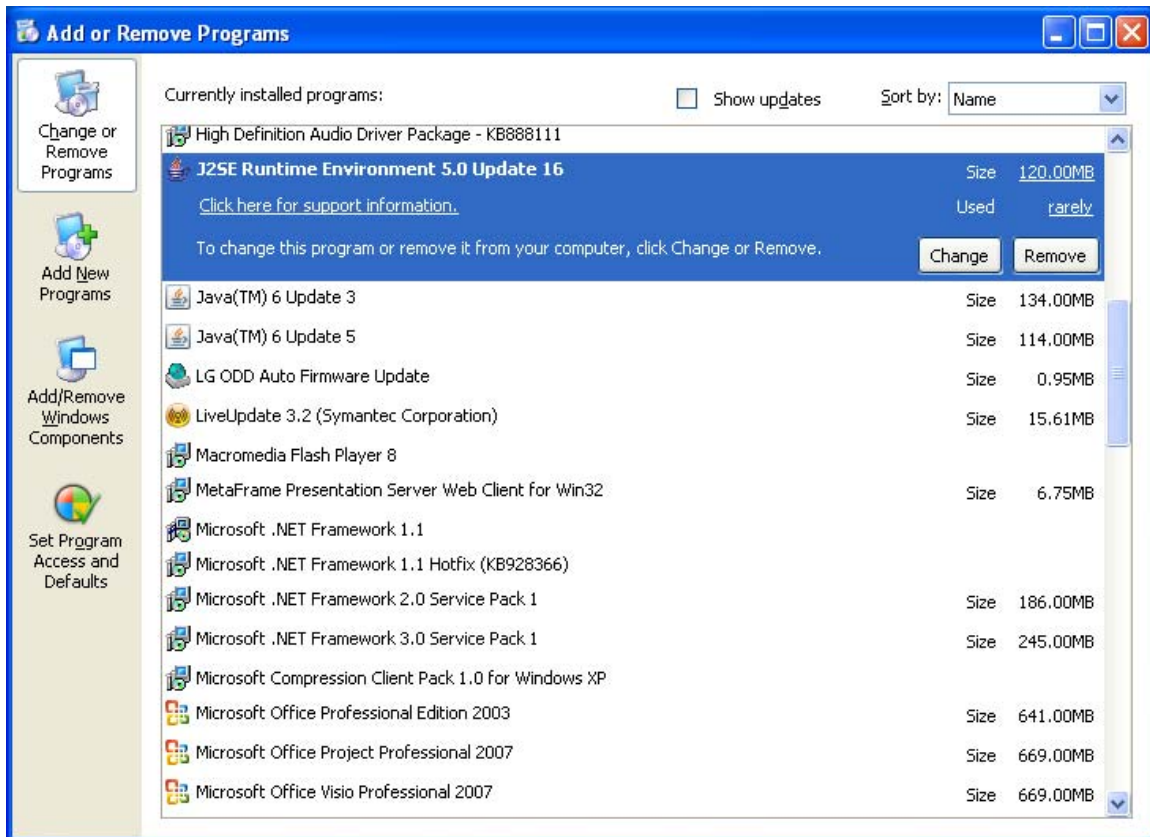
Java 5 (Update 16) Plug-in Quick Check

How to determine if you have the current Java 5.0 (Update 16) Plug-in needed to use the new Kronos 6 time reporting system.

Step 1. Go to **Start>Settings>Control Panel>Add or Remove Programs**



Step 2. In the **Add or Remove Programs** window look for an entry named: **J2SE runtime Environment 5.0 Update 16** (See example below).



Step 3. If you do not see the above entry please proceed to the [instructions](#) for downloading and installing the current Java 5.0 (Update 16) Plug-in. If you have any questions or concerns, please contact your local technical support or the ISS Helpdesk at 202-994-5530.